

# XBee-PRO<sup>®</sup> ZB Wall Router

ZigBee<sup>®</sup> Network Extender/Router

The XBee-PRO ZB wall router is an easy-to-deploy, plug-in extender/router that expands the reach of ZigBee networks.



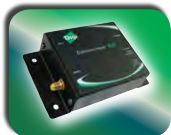
## Overview

Digi's XBee-PRO ZB wall router is a network extender used to create or expand a wireless ZigBee network, allowing seamless communication between ZigBee enabled devices. The wall router plugs into a standard power outlet for quick and easy deployment. Once deployed, the unit acts as a routing node, providing users with expanded network range and adding redundancy to a mesh network.

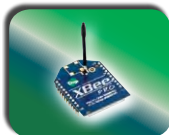
The wall router is built upon the extended-range XBee-PRO<sup>®</sup> ZB module, giving users full interoperability with other XBee<sup>®</sup> ZB based devices. Additionally, the XBee ZB family of products utilizes the ZigBee PRO Feature Set (ZPFS), enabling network interoperability with ZPFS products from other vendors.

Part of Digi's unsurpassed offering of Drop-in Networking products, the XBee-PRO ZB wall router provides seamless communication between devices, including embedded modules, device adapters and gateways. XBee ZB modules deliver wireless connectivity to end-point devices in ZigBee networks. XBee device adapters provide wireless connectivity to electronic devices in wired networks. ConnectPort<sup>™</sup> X gateways enable users to access and configure remote XBee devices in a network.

### Related Products



Gateways



Modules



Adapters



Dev Kits

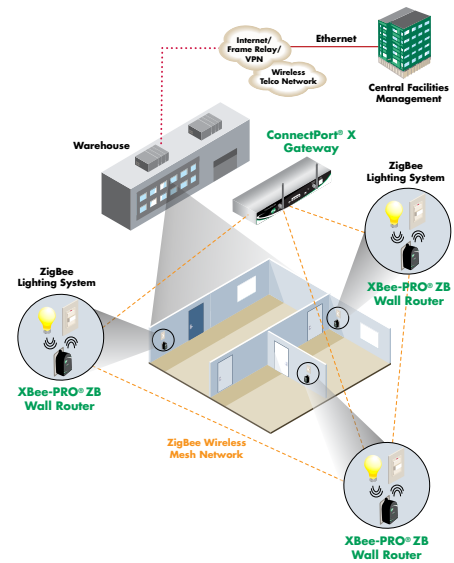


WPAN Adapter



Sensors

### Application Highlight



### Features/Benefits

- Extends the range and strength of a ZigBee network
- Creates additional network pathways for more reliable mesh networking
- Plugs into a standard power outlet for easy deployment
- Small form factor for unobtrusive deployment
- Integrated light and temperature sensors
- Secure mounting tab prevents accidental unplugging and theft (North American unit only)

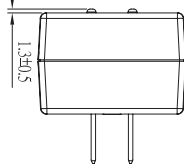


# Platform

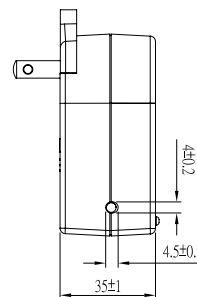
# XBee-PRO® ZB Wall Router

Performance	
RF Data Rate	250 Kbps
Indoor/Urban Range	Up to 300 ft (90 m) / 200 ft (60m) Int'l variants
Outdoor/RF Line-of-Sight Range	Up to 1 mile (1.6 km) / 2500 ft (750 m) Int'l variants
Transmit Power	50 mW (+17 dBm) / 10 mW (+10 dBm) Int'l variants
Receiver Sensitivity (1% PER)	-102 dBm
Features	
Interfaces	Network interoperable with ZigBee PRO Feature Set devices
Frequency Band	2.4 GHz (ISM)
LEDs	Power: Solid when external power is supplied Associate: Blinks when unit is connected and associated to an RF Network
Push Button	Device reset, configuration reset to factory defaults, identification/commissioning mode
Antenna Options	Internal
Locking Mechanism	Unit secures to power outlet using center outlet screw (U.S. only)
Integrated Temperature & Light Sensor	
Temperature Sensor	Range: 0° C to 70° C (32° F to 158° F) Accuracy: +/- 2° C
Ambient Light Sensor	Range of spectral bandwidth: 360 to 970 nm (similar to human eye) Wavelength of peak sensitivity: 570 nm
General	
Dimensions (L x W x H)	2.87 in x 1.97 in x 1.37 in (7.30 cm x 5.00 cm x 3.50 cm)
Weight	2.50 oz (70.87 g)
Power Input	Universal AC input (85VAC to 265VAC)
Environment (Temperature/Lux)	0° C to 70° C (32° F to 158° F; sub 1200 lux)
Relative Humidity	5% to 95% (non-condensing)
Regulatory Approvals	
FCC (USA)	Yes
IC (Canada)	Yes
CE/ETSI (Europe)	Yes, Int'l variant
C-TICK (Australia)	Yes
Telec (Japan)	Yes, Int'l variant

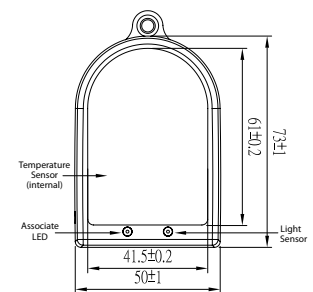
XBee-PRO Wall Router - Top  
(North America version only)



XBee-PRO Wall Router - Side



XBee-PRO Wall Router - Front



Visit [www.digi.com](http://www.digi.com) for part numbers.

**DIGI SERVICE AND SUPPORT** - You can purchase with confidence knowing that Digi is here to support you with expert technical support and a strong five-year warranty. [www.digi.com/support](http://www.digi.com/support)

**Digi International**  
877-912-3444  
952-912-3444  
info@digi.com

**Digi International France**  
+33-1-55-61-98-98  
www.digi.fr

**Digi International KK**  
+81-3-5428-0261  
www.digi-intl.co.jp

**Digi International (HK) Limited**  
+852-2833-1008  
www.digi.cn



91001423  
B3/610

BUY ONLINE • [www.digi.com](http://www.digi.com)

© 2007-2010 Digi International Inc. All rights reserved. Digi, Digi International, the Digi logo, the Making Wireless M2M Easy logo, ConnectPort, XBee and XBee-PRO are either trademarks or registered trademarks of Digi International Inc. in the United States and other countries worldwide. All other trademarks are the property of their respective holders.

