

[Link This](#) | [Comments \(0\)](#)

Average Rating: (0) [Rate this:](#)



Massa M3 Wireless Ultrasonic Sensors Introduced

December 4, 2009

SENSORS: Manufactured by [Massa Products Corp.](#), the M3 Zigbee enabled ultrasonic [sensor](#) design incorporates state-of-the-art ultrasonic technology to provide low cost non-contact distance measurement primarily for remote liquid level monitoring.

Design News Staff

The [M3 ultrasonic sensors](#) stand out because of their affordability and reliability. The [sensor](#) transmits narrow beam sound pulses, processes return echoes, and produces several outputs dependent on the position of the target. The measurement is then transmitted by low power Zigbee radio to a 'gateway' and the information is presented to the user via LAN or web portal.

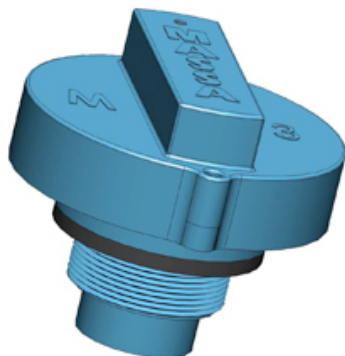
Operating on internal batteries with a typical life span of three to five years, the M3 family of [sensors](#) has a detection range of 4 inches ft to 13 ft. The distance measurement is transmitted via Digi International Xbee radios and gateway.

The M3 [sensor](#) contains advance on board diagnostics as well as many user adjustable output settings including measurement sampling rate, radio transmission rate, averaging of multiple distance measurements, loss-of-echo time-out as well as reporting battery voltage, temperature and other parameters.

The network also allows users to remotely program their [sensors](#) and read ranges for quick integration into their remote monitoring application.

Other features of the M3 ultrasonic [sensor](#) include: chemically resistant Kynar housing with 2-inch NPS fitting for mounting, built-in temperature compensation, diagnostic and monitoring outputs.

- Edited by [Liz Taurasi](#)



Posted by [Design News Staff](#) on December 4, 2009 | [Comments \(0\)](#)

Industries: [Electronics/Test](#)

Average Rating: (0) [Rate this:](#)

POST A COMMENT

Display Name



Before submitting this form, please type the characters displayed above. Note the letters are case sensitive:

HOT TOPICS

[Designing with Sensors](#)