

Global Print Monitor

PRINT & PACKAGING NEWS, COMMENT & ANALYSIS

Friday Dec 10th [Login](#) | [Create an account](#) | [Search](#) | Text size + -



HOME	EDITORIAL	INDUSTRY NEWS	BUSINESS - FINANCE	ECONOMIC OUTLOOK	BLOGS	TECHNOLOGY	WHITE PAPERS	CONTACT
----------------------	---------------------------	-------------------------------	------------------------------------	----------------------------------	-----------------------	----------------------------	------------------------------	-------------------------

[Home](#) > [Technology](#) > [Telecom](#) > Digi and Sprint Partner to Provide Industry's First Commercial-Grade Integrated 4G Routers to Power M2M Solutions

Digi and Sprint Partner to Provide Industry's First Commercial-Grade Integrated 4G Routers to Power M2M Solutions

FRIDAY, 03 DECEMBER 2010 14:25 | EDITOR [TECHNOLOGY - TELECOM](#)

[Share this](#) |
 [Print](#) |
 [Tags](#) |
 [T](#) [T](#) [T](#)

[0 Comments](#)

New Digi Connect® WAN 4G and ConnectPort® X4 4G provide high-speed connectivity to remote sites and devices

Digi International (NASDAQ: DGII) today introduced the industry's first commercial-grade integrated 4G routers - the Digi Connect WAN 4G and ConnectPort X4 4G. Certified by Sprint (NYSE: S) and Clearwire, the routers provide next generation, high-speed, low latency connectivity via 4G networks to remote sites, devices and device/sensor networks. Sprint is the first U.S. national wireless carrier to launch a 4G network, and the blazing fast speeds make the routers ideal for high-bandwidth machine-to-machine (M2M) solutions such as digital signage, video surveillance and mobile computing applications. The low latency of 4G enables mission-critical applications where real-time device connectivity is essential like with remote industrial networks.

"4G dramatically increases the bandwidth and lowers the latency of wireless WAN connections," said Larry Kraft, senior vice president of global sales and marketing, Digi International. "Over five years ago, Digi launched the first commercial grade cellular routers with our Digi Connect WAN. We're now bringing years of expertise with vertically focused M2M applications into this exciting 4G focused partnership with Sprint."

Wayne Ward, vice president of Emerging Solutions, Sprint, added, "4G is opening up new consumer and commercial applications that are transforming the way people use and benefit from mobility. Connectivity of M2M devices is rapidly growing, and Digi is the leading enabler of M2M applications with specific vertical market experience. Our 4G network combined with Digi's M2M expertise will enable new and exciting applications across numerous industries."

Digi 4G routers are ideal for transportation, fleet management, outdoor street lighting, traffic control signal, security, energy management and other applications requiring high bandwidth and low latency connectivity. The Digi Connect WAN 4G features flexible device interfaces including RS-232 serial, USB and Ethernet for device connectivity. The ConnectPort X4 4G also features ZigBee to WiMAX allowing it to connect to a network of ZigBee-enabled wireless devices or sensors. A version with a NEMA X4/IP66 enclosure is also available for harsh environments.

The Digi Connect WAN 4G and ConnectPort X4 4G combined with Sprint Data LinkSM provides secure high speed wireless access to an enterprise network utilizing the advanced Sprint 4G network.

Digi 4G routers are integrated with the iDigi™ platform, a cloud-computing service that makes it easy to remotely manage devices and integrate device information into a company's back-end systems. The routers also include built-in VPN for creating secure connections over public networks and Digi SureLink™ for persistent connections. Digi 4G routers feature a compact, rugged enclosure capable of operating in extreme temperatures and a best-in-class 5-year warranty. The routers also support Python, an easy-to-use, object-based, free, open-source programming language for developing customized controlling applications.

Sprint's 4G network has been serving customers since 2008 and is available today to customers in more than 68 markets in cities like Atlanta, Boston, Chicago, Dallas, Los Angeles, Miami, New York City, Philadelphia, Seattle and Washington, D.C.

Sprint Emerging Solutions Group is an industry leader in M2M and embedded solutions, delivering a full complement of assets critical to successful M2M and embedded solutions deployments. These include: network agnostic capabilities (including 3G, 4G, CDMA, iDEN, and a reliable Tier 1 IP network); specialized industry solutions engineering teams; an open approach to devices and applications through the company's Open Device



[LATEST 10 TODAY](#) | [MOST READ RECENTLY](#)

[Uni-Pixel, Inc. Announces Pricing of Common Stock Offering](#)

[An Edale Beta sale in Romania](#)

[RHIEM Druck installs Germany's first SYRIUS laminating system of the latest-generation from STEINEMANN](#)

[What was the biggest tech story of the year? We ask LeWeb \[Video\]](#)

[BAF Graphics uses novel print & production techniques to dress Selfridges Christmas windows](#)

[FESPA European Congress Scores Top Marks in Brussels](#)

[Digital label converting gathers pace with wide-spread adoption of the HP Indigo WS6000 Digital Press](#)

[Agentur Publik Steps Up to K4 Version 6 in a Single Weekend](#)

[First hot melt extrusion compendium now available](#)

[Alcoa Kawneer Products Help Put Innovative Colorado Courthouse on Track for LEED Gold Certification](#)



Initiative, an expansive M2M partner ecosystem; and the ability to provide customers with customized solutions that can include distribution, branding, billing and customer care services. To learn more, view this special "What if ..." M2M video and visit www.sprint.com/m2m.

The new Digi routers are certified by Sprint and CLEAR.

<http://www.digi.com>

te! a Friend

Tweet 0

Like

Buzz 0

1 tweet

retweet

Like

DISQUS

Add New Comment

Optional: Login below.

DISQUS Twitter OpenID YAHOO!

Empty text input field for adding a comment.

Post as ...

Showing 0 comments

Sort by Popular now Subscribe by email Subscribe by RSS

Trackback URL <http://disqus.com/forums>

blog comments powered by DISQUS

[back to top](#)

< Prev Next >

Submit your Press Releases



Your ad could be displayed here just contact: webeditor@globalprintmonitor.com 300 x 100

Related (All Languages)

No related articles found.

Sponsors

energy savers socializers supervisors apps kicker > problem solvers

INTERNATIONAL COMMUNICATIONS FORUM PRESS MUSIC WRITING PUBLISHING BROADCASTING ADVERTISING THEATRE FILMS

GESUNDHEIT

and IMPACT of viral distribution.

Disqus Comments

- People
- Recent
- Popular

Recent Comments



polit2k Interesting that Americans unlike most Europeans don't answer "WikiLeaks". What was the biggest tech story of the year? We ask LeWeb [Video] · 5 hours ago

Submit your press releases for **FREE publication**. Send them by email to our **Editor**. Become a sponsor of Global Print Monitor to get your name and link to your web site in the sponsor's cloud.



Best of the Moment

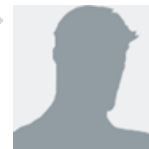
The Browser iPhone app brings Writing Worth Reading to your fingertips



The FiveBooks Science Collection

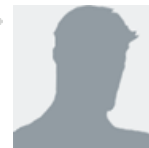


Your ad could be displayed here
just contact: webeditor@globalprintmonitor.com
623 x 90



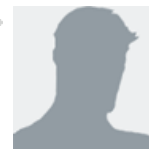
[outsourcing services](#) Kudos to all the winners! Looking forward to the next event.

[Monotype Imaging Announces Winning Entries for the First Ever Web Font Awards](#) · 1 day ago



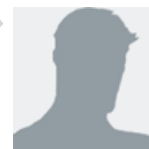
[Zophopas](#) Abwärmenutzung und Kraftwärmekopplung gäbe es ja schon lange, leider läßt die tatsächliche Effizienz meist zu wünschen übrig, wenn man diese Systeme überlegt und effizient einsetzen würde, könnten...

<http://www.globalprintmonitor.com/en/gpm-technology/green-technology/40354-unter-wert-verheizt-> · 1 week ago



[Komori sheet separators](#) The 300 series sheet separator is the most popular sheet finger for the Komori printing press, and is also used on the Shinohara printing press

[Cosmo Films/GBC Commercial introduces 6300 laminator at Print '09](#) · 1 week ago



[Komori wash up blades](#) The development of the B2 Komori Lithrone S29 series was an extension of both the B1 Lithrone S40 series, and of the Lithrone 28 series.

[Techniweb's innovative concepts for paper and blanket cleaning](#) · 1 week ago

community on **DISQUS**
Powered by Disqus

Latest Weblinks

- ◆ [Crystal Service Company](#)
- ◆ [Arvato](#)
- ◆ [Alm](#)
- ◆ [Silicon Publishing](#)
- ◆ [Neopost USA](#)
- ◆ [Pactiv Corporation](#)
- ◆ [Reichhold](#)
- ◆ [NOVA Chemicals](#)
- ◆ [Celanese](#)
- ◆ [United Stationers Inc.](#)
- ◆ [BASF](#)
- ◆ [IAC](#)
- ◆ [The Daily Beast](#)
- ◆ [Newsweek](#)
- ◆ [Sonoco](#)

- [Schawk, Inc.](#)
- [RR Donnelley](#)
- [Quad/Graphics](#)
- [Media Sciences International, Inc.](#)
- [American Greetings](#)

What is my IP

You are connecting to this site from: 99.140.224.251

Last update

Last story posted on_Friday 10 December 2010, 11:30



[Education News](#) | [Business and Finance](#) | [Economic Outlook](#) | [Blogs](#) | [Technology](#) | [White Papers](#) | [Contact](#)

Copyright © 2010 Global Print Monitor. All Rights Reserved. Designed by [JoomlArt.com](#).