



EDITION: U.S.
News & Markets
Sectors & Industries
Analysis & Opinion
Search
SEARCH


The Plum Card
 1.5% Early Pay Discount - OR - Up to 2 Months to Defer Payment
[LEARN MORE](#)

ARTICLE




SPECIAL ONLINE OFFER
ENGAGE YOUR WORLD. 
 Start Now with 12 issues for just \$12

NetControl chooses Digi Connect WAN 3G to enable its NetCase on-board bus ticketing system

Tue Jun 22, 2010 9:30am EDT

Tourist Bus Company OpenTour leverages system to improve fleet security, com fraud, and speed passenger boarding
 MINNETONKA, Minn.--(Business Wire)--
 Digi International (NASDAQ: DGII) today announced the integration of the Digi Connect WAN 3G cellular router into NetCase, an on-board ticketing system with touchscreen PC from NetControl. The French specialist in on-board computer systems for the tourism industry installed the NetCase in 35 of the buses owned by OpenTour, the Société des Lignes Touristiques created by Cityrama, that offers sightseeing tours in Paris, Nice, Lyon, etc. The Connect WAN 3G connects the NetCase to the NetControl servers via high-speed data connectivity over standard cellular networks. Once connected, the NetCase facilitates on-board ticket sales, card payments using payment terminals, the collection of prepa tickets and vouchers, and the validation of electronic tickets identified by reservation code (the tickets are validated using a 2D barcode scanner).

"With the recommendation of M2M Design, a French distributor and technical support provider for M2M solutions, we chose this solution from Digi International because it could be implemented almost immediately as it is so easy to connect to our NetCase," says Nicolas Bebawi, Computer Manager at NetControl. "The Digi Connect WAN 3G provides high-quality connectivity with built-in management. Furthermore, the fact that Digi products are used by major retailers and well-established companies was very reassuring."

Thanks to its high-speed mobile connection, Digi Connect WAN 3G facilitates rapid, regular and practically guaranteed data transfer. Ticket validation by the server and the transfer of card payment details are carried out in real time, which greatly reduces the time it takes for passengers to board the bus. In addition, the improved data transfer for ticket validation enables the OpenTour Company to protect its system from all types of fraud.

Digi Connect WAN 3G enables data transfer for the complete vehicle fleet management with constant connection to the cash register for sales analysis validation. It also allows fleet movements to be analyzed in real time by means of data transfer which provides a record of each vehicle's trips.

Nicolas Bebawi concludes: "Thanks to Digi Connect WAN 3G's reliability, the NetCase has become an all-around effective piece of equipment for OpenTour and manages various operational parameters in real time. Our provision of an on-board computerized ticketing system in the OpenTour buses has become a benchmark for quality and operations in the field of sightseeing tours."

About Digi International

Digi International is making wireless M2M easy by developing reliable products and solutions to connect and securely manage local or remote electronics devices over the network or via the Web. Digi offers the highest levels of performance flexibility and quality, and markets its products through a global network of distributors and resellers, systems integrators and original equipment manufacturers (OEMs). For more information, visit Digi's Web site at www.digi.com, or call 877-912-3444

For more information, visit Digi's Web site at www.digi.com, or call 877-912-3444 (U.S.) or 952-912-3444 (International).

MOST POPULAR MOST SHARED

1. [Clintons in tears over Chelsea? You can bet on it](#)
10:53am EDT
2. [WRAPUP 5-Engineers detect seepage near BP oil well](#)
18 Jul 2010
3. [Investors worry about seepage at capped BP well](#) VIDEO
11:25am EDT
4. [WRAPUP 5-Engineers detect seepage near BP oil well](#)
18 Jul 2010
5. [Ancient ship unearthed at World Trade Center site](#)
15 Jul 2010
6. [Losing magnet hove his at air show](#) VIDEO

- 6. [Leasing magnate buys big at an show | VIDEO](#)
12:06pm EDT
- 7. [WRAPUP 3-Investors worry about seepage at capped BP well](#)
8:58am EDT
- 8. [BP says Gulf oil seep may not be from its well](#)
6:23am EDT
- 9. [Jobs' offer of free iPhone cases eases Apple PR woes: analysts](#)
10:34am EDT
- 10. [UPDATE 1-Boeing says more India C-17 orders possible](#)
7:16am EDT

All brand names and product names are trademarks or registered trademarks of their respective companies.

Jan McBride
 Digi International
 +1(0) 952 912-3473
 Jan.mcbride@digi.com
 or
 Matt Serra
 Mulberry Marketing Communications
 +1(0) 312-664-1532
 mserra@mulberrymc.com

Copyright Business Wire 2010

ADS BY GOOGLE

[What's This?](#)

[U.S Tour Packages on Sale](#)

"Buy 2 Get 1 Free" for Most of U.S Tour Packages! 626-457-5666
www.7usa8.com

[ORBITZ - Official Site](#)

Plan Your Trips with ORBITZ. Save on Flights, Hotels, Cars & Cruises!
www.ORBITZ.com

[Rent a School Bus Today](#)

All Events, Nationwide, Free Quote Great Rates, (800)979-4498
www.USABusCharter.com

MORE FROM REUTERS



Homebuilder confidence at 15-month low

WASHINGTON (Reuters) - Home-builder sentiment fell more-than-expected in July to the lowest level in more than a year after a popular home-buyer tax credit expired in April, the National Association of Home Builders said on

Monday.

[Halliburton profit beats forecasts](#)

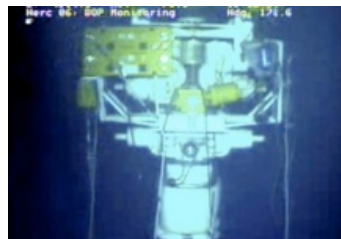
[Nokia Siemens buys Motorola network ops for \\$1.2 billion](#)

[Moody's cuts Ireland on bank, growth worries](#)

[Obama urges Republicans help pass jobless aid](#)

[Onex, CPPIB eye \\$4.5 billion bid for Britain's Tomkins](#)

» [More Top News](#)



Capped BP well springs a leak

There may be problems with the cap that stopped oil spewing into the Gulf, worrying investors as speculation grows that BP may sell assets to pay for the costs of the spill.

[Full Article](#) | [Video](#)

[BP says oil spill bill nears \\$4 billion](#)

[Slideshow: BP well leaking again](#)

[Factbox: Oil spills across the globe](#)

[Breakingviews: End of beginning for BP](#)

[GULF OF MEXICO OIL SPILL](#)

REUTERS

© Copyright 2010 Thomson Reuters

Editorial Editions:

REUTERS

Contact Us

THOMSON REUTERS

Copyright

ONLINE PRODUCTS

Acquisitions Monthly

Contact Us	Analyst Research	Copyright	Acquisitions Monthly
Advertise With Us	Mobile	Disclaimer	Buyouts
Help	Newsletters	Privacy	Venture Capital Journal
Journalism Handbook	RSS	Professional Products	International Financing Review
Archive	Podcasts	Professional Products Support	Project Finance International
Site Index	Widgets	Financial Products	PEhub.com
Video Index	Your View	About Thomson Reuters	PE Week
Reader Feedback	Labs	Careers	FindLaw

Thomson Reuters is the world's largest international multimedia news agency, providing investing news, world news, business news, technology news, headline news, small business news, news alerts, personal finance, stock market, and mutual funds information available on Reuters.com, video, mobile, and interactive television platforms. Thomson Reuters journalists are subject to an [Editorial Handbook](#) which requires fair presentation and disclosure of relevant interests.

NYSE and AMEX quotes delayed by at least 20 minutes. Nasdaq delayed by at least 15 minutes. For a complete list of exchanges and delays, [please click here](#).