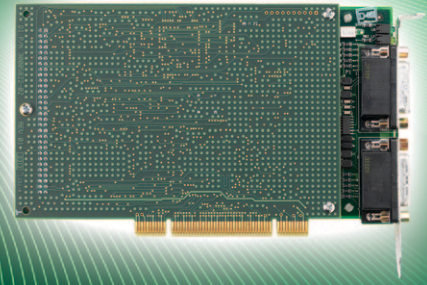


DataFire[®] SYNC/570i

Digital WAN Adapters

Adapters provide remote LAN, WAN and SNA connectivity for PCI servers, featuring line speeds up to T1/E1, a range of flexible interface options and custom development tools.



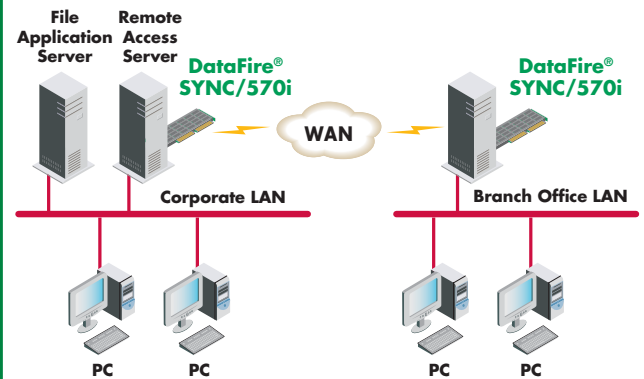
Overview

The DataFire SYNC/570i delivers tightly integrated synchronous remote connectivity. This WAN adapter is a cost-effective solution for LAN-to-LAN, client-to-LAN and client-to-IBM host connectivity. It is ideal for branch office and enterprise solutions where two to 16 ports per server are required.

Designed on the Hitachi HD64570 Serial Communications Adapter (SCA) chip, this high-performing synchronous adapter features Direct Memory Access (DMA)-to-shared memory architecture. The on-board 256K memory is directly addressable by the system and the DMA of the SCA.

The DataFire SYNC/570i is a complete hardware and software solution, supporting all the major operating systems. A Universal Interface Bus (UIB) enables a different interface on each port, without using jumpers or switches. Each port can report the status of modem signals and attached cables. Each interface can measure and report the speed of modems and CSU/DSUs.

Application Highlight



Features/Benefits

- Ideal platform for Frame Relay, X.25, SNA and server-based routing
- DMA-to-shared memory architecture
- Supports four DMA channels on two-port boards and eight DMA channels on four-port boards
- Universal PCI bus slot supports 3.3V and 5V
- Driver Development Kits (DDKs) available for custom development



Specifications

DataFire® SYNC/570i

Features	
Serial Ports	2 or 4 RS-232 and V.35
PCI Card Slot	Universal 3.3V and 5V support
Line Speed	Aggregated performance up to 5 Mbps
Memory	Supports 4 DMA channels on 2-port boards; 8 DMA channels on 4-port boards
Operating Systems	Windows NT® 4.0, Windows® 2000, Windows® XP, Third Party X.25, Frame Relay and SNA solutions for UnixWare™, OS/2, QNX, Linux® and DOS available
Dimensions (L x W x H)	4.2 in x 0.68 in x 7.4 in (10.7 cm x 1.7 cm x 18.7 cm)
Weight	8.0 oz (210.2 g)
Other	Software configurable I/O and memory addresses, UIB automatic interface detection
Software	
Protocol	Supports frame relay, X.25, PPP and SNA
Graphical Interface	Easy-to-use, Full tracking and monitoring
Routing	Supports IP/IPX
Circuits	Supports up to 256 virtual circuits (X.25)
Flow Control	BECN, LMI
Frame Relay	Supports up to 64 DLCIs per board
Transmission	Multiple CIR options
Compliance	Microsoft's NDIS and WAN Miniport driver
Data Flow	DTE/DCE support
Power Requirements	
+5VDC	1.5 A
+3.3VDC	0.5 mA
+12VDC	90 mA
Surge Protection	Surge protection on all data lines
Environmental	
Operating Temperature	10° C to 55° C (50° F to 131° F)
Relative Humidity	5% to 90% (non-condensing)
Altitude	0 to 12,000 feet (0 to 3,660 meters)
Regulatory Approvals	
Safety	UL 1950, CSA 22.2, EN60950
Emissions/Immunity	FCC Part 15 Subpart B, EN55022 (Class B), EN50082-2, ICES-003, CISPR 22 (Class B)

Visit www.digi.com for part numbers.

DIGI SERVICE AND SUPPORT - You can purchase with confidence knowing that Digi is here to support you with expert technical support and a strong five-year warranty. www.digi.com/support

Digi International
877-912-3444
952-912-3444
info@digi.com

**Digi International
France**
+33-1-55-61-98-98
www.digi.fr

**Digi International
KK**
+81-3-5428-0261
www.digi-intl.co.jp

**Digi International
(HK) Limited**
+852-2833-1008
www.digi.cn

BUY ONLINE • www.digi.com

91000896
D1/1009

© 1999-2009 Digi International Inc.
Digi, Digi International, the Digi logo, and DataFire are trademarks or registered trademarks of Digi International Inc. in the United States and other countries worldwide. All other trademarks are the property of their respective owners.

