



Development Solutions for OEMs

A Complete Solution

Of all the IoT vendors you could choose, why choose Digi? The answer is best summed up in a single word: experience. Digi has been offering award-winning products and cost-effective solutions for an enormous range of customer use cases since before there even was an Internet of Things (IoT). From drones to remote oil platforms at sea to agricultural and industrial monitoring to applications in outer space, Digi has partnered with developers and enterprises across the globe. Digi is a complete solution provider, capable of supporting every aspect of your IoT project.



Development:

Digi's embedded modules provide a comprehensive platform for prototyping and development, including pre-certified, programmable wireless modems, your choice of protocols to meet your global deployment requirements and extensive software development tools, APIs and libraries. If you need assistance, Digi's Wireless Design Services team can provide complete end-to-end product design and development.

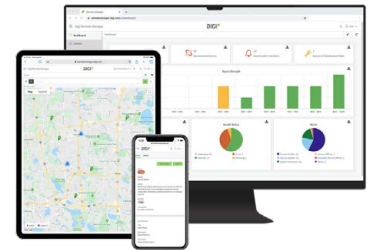


Deployment:

Digi offers wireless modems and gateways for IoT connectivity and edge computing, as well as the tools and resources to put it all together. Get to market faster with the support of Digi's award-winning Digi XBee Tools, including network mapping and a sophisticated mobile app to support range testing and optimal node placement for the best signal.

Management:

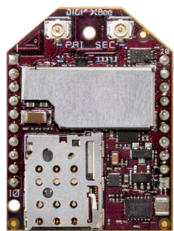
During and after deployment, Digi Remote Manager® supports visibility, security and scalability for your IoT system. This cloud-based solution offers a single window into your network, whether that means dozens or thousands of devices. Digi Remote Manager automates configuration fixes and alerts, and enables you to perform mass firmware updates with the click of a button. Digi Remote Manager even streamlines troubleshooting in the event of a network outage by offering secure out-of-band access to many devices through a serial port and command line interface.



About Digi International

Digi International (Nasdaq: DGII) has been a pioneer in bringing advanced technologies to customers in industrial environments, energy, transportation, healthcare, agriculture and more since 1985. Digi solutions support commercial and industrial enterprises, as well as public sector organizations, in deploying, monitoring and managing critical infrastructure in demanding environments. We do it with high levels of security, relentless reliability and bulletproof performance — all while meeting strict compliance standards. If you're thinking of an IoT project that can take your organization to the next level, think Digi.

Digi XBee



Digi XBee Tools



Development Kits



Digi ConnectCore



For more information, visit:

www.digi.com

877-912-3444 | 952-912-3444

© 2021 Digi International Inc. All rights reserved. A3/1221 91004443

