

Quick Start Guide

PortServer® TS M MEI



Welcome to your Digi product

Get started: This guide helps you with initial product setup. Need more? Find additional supporting material for this product at www.digi.com/support/portservertsmmei. Or connect to the online documentation by scanning this code:



Digi Technical Support: Digi offers multiple support plans to help you get the most out of your product. For information on Technical Support plans and pricing, contact us at 877.912.3444 or visit www.digi.com/support.

Documentation feedback: To provide feedback on this documentation, send your comments to techcomm@digi.com.

1 Verify your components

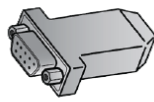
Included equipment



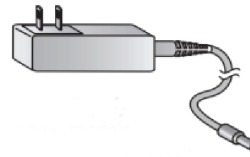
PortServer TS M MEI



RJ-11 phone cord



DB-9 - RJ-45 adapter
(available with some models)

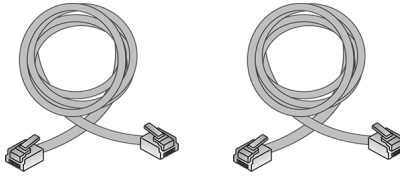


Power supply



Power supply adapters

Required additional equipment



2 Ethernet cable

Note A loose label sticker that includes the unique device password is included in the box. Retain this label sticker with your hardware records. This default password will be needed if the device is factory reset and you want to access the web UI on the device.

2 Set DIP Switch

For each serial port on the PortServer, set the serial DIP switch according to your serial device requirements (EIA-232/422/485). Pinout information is included in this Quick Start Guide. For initial configuration, via the serial port, use of the EIA-232 settings is recommended.

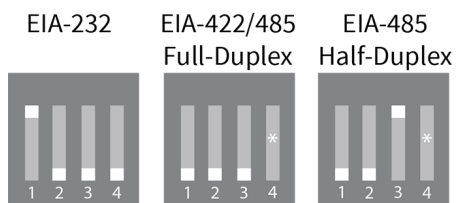
Note If switch 4 is up, the termination resistor is connected. If switch 4 is down, the termination resistor is not connected.

PortServer TS 1-4 port DIP Switch settings

Switch settings

Up/On

Down/Off



3 Connect the hardware

1. Connect phone line to modem.
2. Connect serial device and a straight through CAT 5 cable.
3. Connect Ethernet cable.
4. Connect power supply.



LEDs and startup status: All LEDs flash on startup.

- **Link LED:** (green) On: Physical network detected.
- **Power LED:** (green) Steady blinking: seeking or waiting for an IP address.
- **CD/ACT LED:** (yellow) Modem carrier detect; modem is online.
- **ACT LED:** (yellow):
 - ON: Bad Initialization
 - OFF: Ready
 - BLINKING: network activity

4 Download required software

Digi provides several utilities that discover devices present on a network. You will need to download the **Device Discovery Utility**.

1. Navigate to: www.digi.com/support/portservertsmmei.
2. Scroll down and click **Product Support**.
3. Click **Utilities**.
4. Under **Operating System Specific Utilities**, select your operating system. A list of available drivers appears.
5. Download and run **Device Discovery Utility**.

If you will use Digi's RealPort software to manage the serial ports for your products, download the RealPort software.

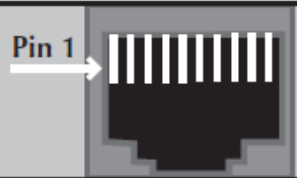
1. Navigate to: www.digi.com/support/portservertsmmei.
2. Scroll down and click **Product Support**.
3. Click **Drivers**.
4. Under **Operating System Specific Drivers**, select your operating system. A list of available downloads and release notes appears.
5. Download the RealPort driver and the release notes.

Note For Windows operating systems, unzip the download package and run the executable. For Linux or Unix operating systems, follow instructions in the release notes.

5 Configure the serial ports

1. Navigate to www.digi.com/support/portservertsmmei.
2. Download and install the **Digi Discovery Utility**.
 - a. Click **Product Support > Utilities**.
 - b. From the **Operating System Specific Utilities** list box, select your operating system.
 - c. Click **Device Discovery Utility for Windows** to download the utility.
 - d. Click the downloaded utility to install it.
3. Use **Digi Discovery Utility** to discover devices on your network and open the web interface:
 - a. In the list of discovered devices, select the PortServer TS M MEI device. Configure the IP address, if necessary.
 - b. Click **Open web interface**.
 - c. A login prompt for the web interface appears. Enter the default user name: **root**. The default password is printed on the device label. If a password is not on the device label, the default password is **dbps**. If neither password works, the password may have been changed. Contact your system administrator.
4. Configure serial port settings using port profiles. Port profiles are a defined set of serial port parameters for a particular use. For PortServer TS M MEI products, Digi recommends the RealPort port profile. To configure ports to use the RealPort port profile:
 - a. In the web interface, under **Configuration**, click **Serial Ports**.
 - b. On the **Serial Port Configuration** page, click the port to be configured and click **Change Profile**.
 - c. In the list of profiles, select the **RealPort** port profile, then click **Apply**.
 - d. For EIA-232 devices that will be connected using 8-wire cables, configure the **Altpin** setting. The default for this setting is off; it must be enabled as needed for each serial port. For each applicable serial port, click **Advanced Serial Settings** and select the **Enable DCD on 8-pin RJ45 connectors (Altpin)** setting, then click **Apply**.

6 Pinouts



RJ-45 Pin	EIA-232	EIA-422/485 Full-Duplex	EIA-485 Half-Duplex
1	RI	TXD-	TXD-
2	DSR	RxD-	RxD-
3	RTS	RTS+	n/a
4	GND	GND	GND
5	TxD	TxD+	TxD+
6	RxD	RxD+	RxD+
7	SG	SG	SG
8	CTS	CTS+	n/a
9	DTR	RTS-	n/a
10	DCD	CTS-	n/a