

Quick Start Guide

Digi CM™



Welcome to your Digi product

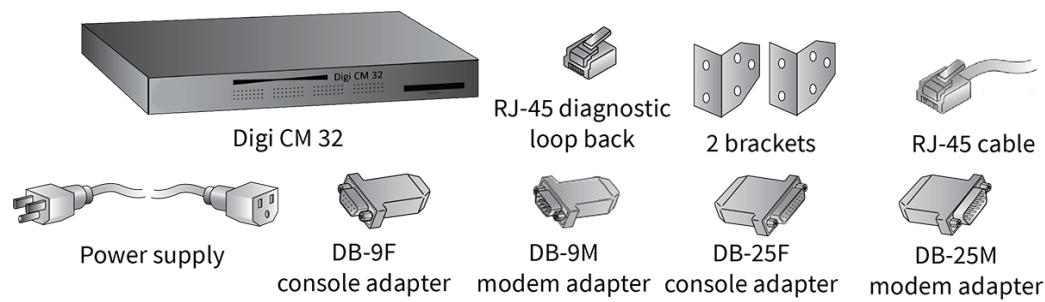
Get started: This guide helps you with initial product setup. Need more? Find additional supporting material for this product at www.digi.com/products/consolerversers/digicm. Or connect to the online documentation by scanning this code:



Digi Technical Support: Digi offers multiple support plans to help you get the most out of your product. For information on Technical Support plans and pricing, contact us at 877.912.3444 or visit www.digi.com/support.

Documentation feedback: To provide feedback on this documentation, send your comments to techcomm@digi.com.

1 Verify your components

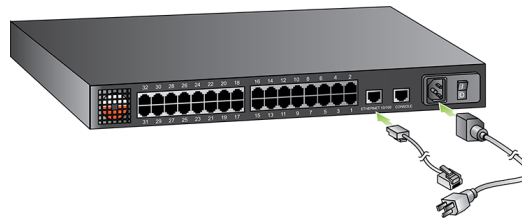


Verify that you have all included equipment. If any item is missing or damaged, contact your supplier.

Note A loose label sticker that includes the unique device password is included in the box. Retain this label sticker with your hardware records. This default password will be needed if the device is factory reset and you want to access the web UI on the device.

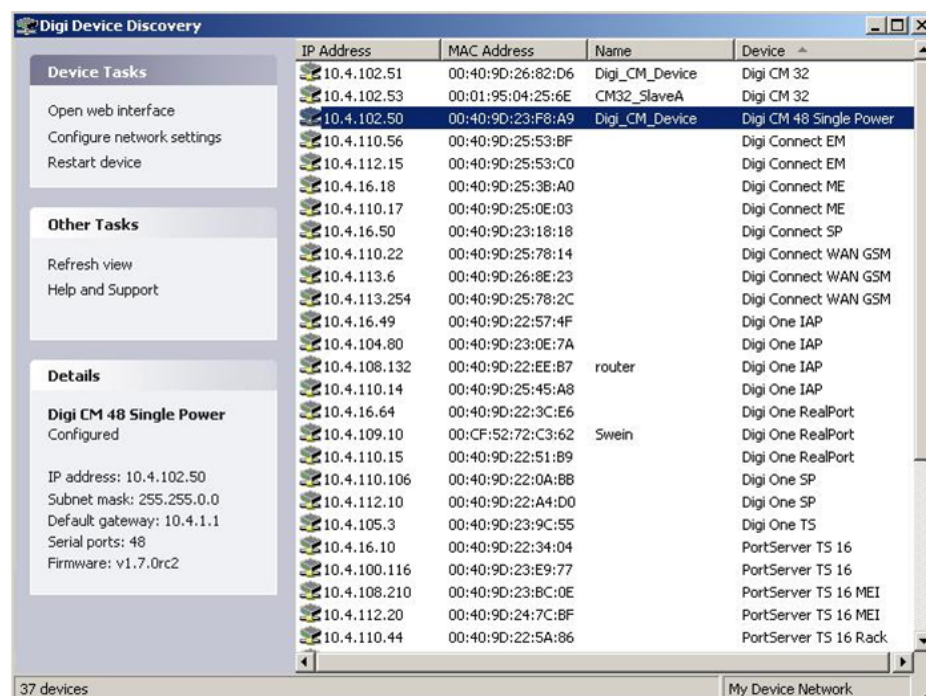
2 Connect the hardware

1. Connect the Ethernet cable.
2. Connect the power supply.
3. Switch the power on.



3 Initial configuration

1. Run the Device Discovery Utility or DPA utility:
 - a. Go to www.digi.com/products/consolerversers/digicm.
 - b. From the **Product Support** tab, click **Utilities**.
 - c. Select your operating system from the drop-down list, then download and run the Device Discovery Utility for Windows or the DPA utility for Unix/Linux.
2. Click **Configure** to set the initial IP address, if it hasn't already been assigned.
3. Click **Open Web Interface** to configure the device. A login screen appears.
4. Enter the default user name and password. The default user name is **root**. The default password is printed on the device label. If a password is not on the label, the default password is **dbps**. If neither default password works, the password may have been updated. Check with your system administrator.



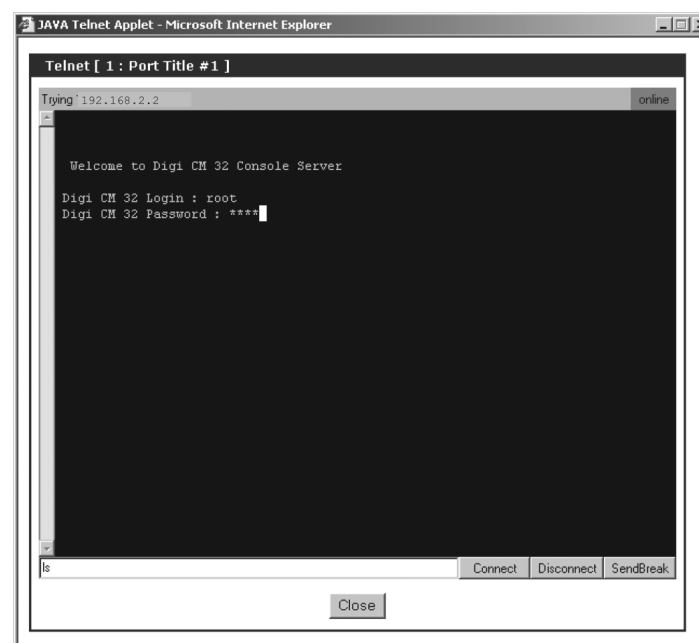
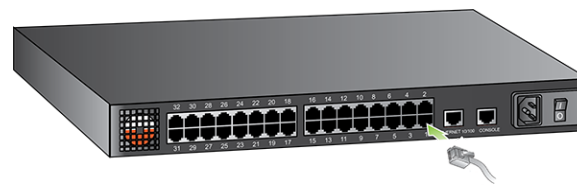
To perform initial device configuration, use the discovery tool or use the straight-thru serial cable with the appropriate adapter to the CM console port, https, or SSHv2.

If you are a power user, you can use the configuration menu:

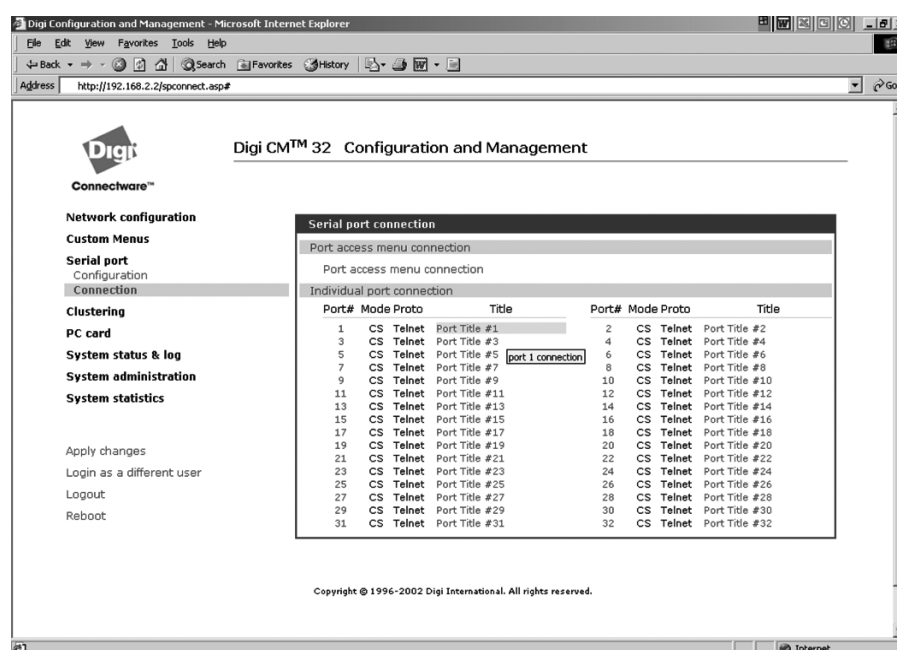
1. Establish a serial connection through the console port (9600, 8, N, 1).
2. Login and enter the default user name and password. The default user name is **root**. The default password is printed on the device label. If a password is not on the label, the default password is **dbps**. If neither default password works, the password may have been updated. Check with your system administrator.
3. Type the command **configmenu**. Select option 1 - **Network Configuration** and follow the prompts.
4. Enter the IP address in the URL address bar of your browser and go to **Test Configuration**.

4 Test configuration





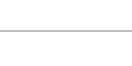
1. Insert the RJ-45 diagnostic loop into Port 1.
2. In the log in dialog, enter the default user ID and password. The default user ID is **root**. The default password is printed on the device label. If a password is not on the label, the default password is **dbps**. If neither default password works, the password may have been updated. Check with your system administrator.
3. Log in to port 1. The default user name is **root**. The default password is printed on the device label. If a password is not on the label, the default password is **dbps**. If neither default password works, the password may have been updated. Check with your system administrator.
Verify your connection to the port by typing some text. If the text appears correctly on the screen, the configuration is correct.
4. Click **Close** to exit the port.



5. In the left navigation pane, click **Serial Port>Connection>PortTitle#**.



You have successfully installed your Digi CM. Configure the device for your application using your browser. To get back to your Digi CM after your initial configuration, enter the IP address in the URL address bar and log in. Use the navigation bar on the left to alter your configuration. The following table shows a list of available adapters and part numbers.

Connection	Adapters (in quantities of 8)	Order #	Application
	DB-9M Modem adapter	76000702	DCE devices such as modems with DB9 female ports
	DB-9F Console adapter	76000671	Bay Accelar, Nortel and other DB-9 DTE
	DB-25F Console adapter	76000673	DTE devices with DB-25 male ports
	DB-25M Modem adapter	76000670	DCE devices such as modems
	DB-25M Console adapter	76000672	Sun SPARC and other DTE devices with DB-25 female ports