



DIGI XBEE TO IP  
GATEWAY WITH CLOUD  
MANAGEMENT SERVICES



# DIGI XBEE INDUSTRIAL GATEWAY

Programmable gateway connects Digi XBee enabled devices to remote applications over cellular or Ethernet

Digi XBee® Industrial Gateway is a rugged Digi XBee to IP solution. Ideal for any environment, the gateway has an extended temperature range and rugged enclosure.

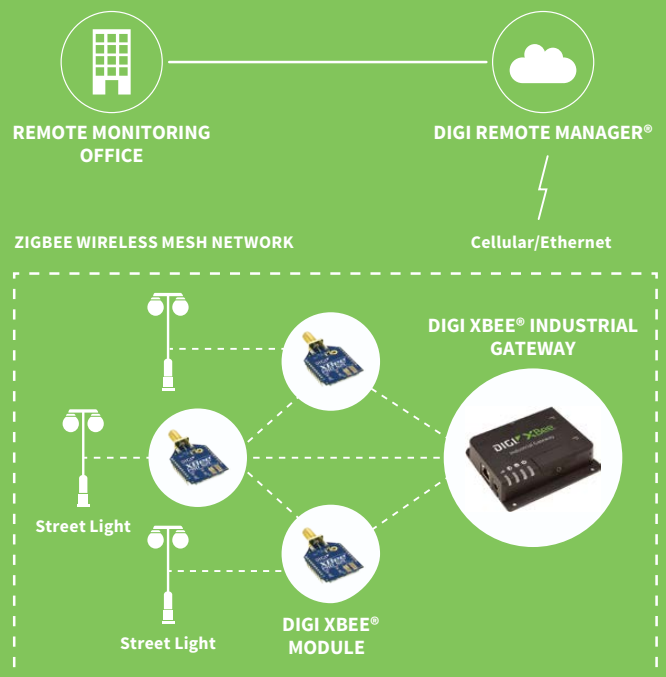
Digi XBee Industrial Gateway features scalable remote configuration and management of Digi XBee networks. By default, all Digi XBee data sent to the gateway is automatically available to online applications via Digi Remote Manager®. With a simple, open-source Python development environment, this gateway also enables custom applications to run locally while interfacing across existing Ethernet or cellular networks for WAN connectivity to cloud-based applications.

Digi XBee Gateway products can be managed remotely via Digi Remote Manager, supporting features like remote firmware upgrades, configuration changes and event alarms. With Digi Remote Manager, users can efficiently scale their network from a single device to hundreds of thousands of remote devices.

## BENEFITS

- Open-source Python environment for custom application development on the gateway
- Out-of-box integration with Digi Remote Manager® enables remote connectivity, configuration and management of Digi XBee networks
- ZigBee enabled for connection to local wireless devices
- Cellular and Ethernet WAN options for flexible broadband connectivity
- Can be deployed in any environment due to industrial temp range and rugged enclosure
- Digi Foundations™ 1-, 3- and 5-year subscription available

## APPLICATION EXAMPLE



## RELATED PRODUCTS



Modules



Adapters



Development  
Kits



Digi Remote  
Manager®

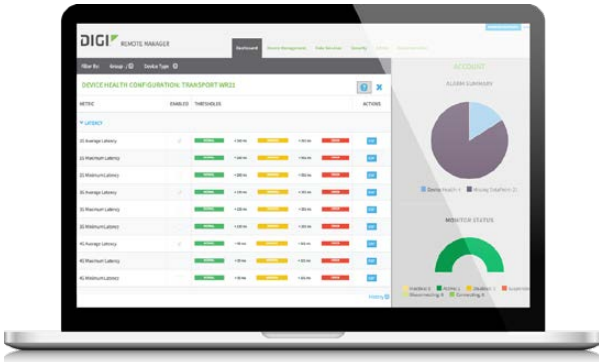


Digi Design  
Services

SPECIFICATIONS		Digi XBee® Industrial Gateway	Digi XBee® Industrial Cellular Gateway
<b>GENERAL</b>			
MANAGEMENT	Secure enterprise management via Digi Remote Manager®		
PROTOCOLS	UDP/TCP, DHCP		
LEDS	Cellular signal strength, network (LAN/WAN), ZigBee (wireless LAN), power		
SECURITY	TLS 1.2, cellular network security		
<b>WWAN</b>			
3G HSPA+, BANDS	N/A	B5(850), B8(900), B2(1900), B1(2100), B4(AWS)	
LTE CATEGORY 1	N/A	Verizon: bands 2, 4, 13 AT&T, T-Mobile: B2(1900), B4(AWS1700), B5(850), B12/B12(700)	
ANTENNA CONNECTORS	N/A	HSPA+ version: 1 x 50 Ω SMA (center pin: female); LTE version: 2 x 50 Ω SMA (center pin: female)	
SIM SLOTS	N/A	2 x 2FF SIM slots; second SIM slot reserved for future use	
SIM SECURITY	N/A	Screw-down SIM cover	
<b>SOFTWARE &amp; MANAGEMENT</b>			
PYTHON	2.7.1		
MEMORY FREE SPACE	20 MB RAM and 20MB Flash for Python applications		
XBEE GATEWAY APPLICATION	Wireless LAN data sent to the gateway is automatically available to online applications via Digi Remote Manager		
<b>ZIGBEE</b>			
ZIGBEE STACK	ZigBee Standard and ZigBee PRO versions available		
ZIGBEE MODULE	Standard: Digi XBee ZB SMT (S2C); PRO: Digi XBee Pro ZB SMT (S2C)		
ZIGBEE	Standard: transmit power 6.3 mW (+8 dBm); receiver sensitivity: -102 dBm PRO: transmit power 63 mW (18dBm); receiver sensitivity: -102 dBm		
ZIGBEE ANTENNA	1 x 50 Ω SMA (center pin: female)		
<b>ETHERNET</b>			
PORTS	(1) RJ-45 port		
PHYSICAL LAYER	10/100 Base-T		
DATA RATE	10/100 Mbps (auto-sensing)		
MODE	Full or half duplex (auto-sensing)		
INTERFACE	Auto MDI/MDIX		
ROUTING	Ethernet port designed for configuration and WAN backhaul		
<b>PHYSICAL</b>			
DIMENSIONS (L X W X H)	7.62 cm x 10.16 cm x 2.54 cm (3 in x 4 in x 1 in)		
WEIGHT	.22 kg (0.5 lb)		
ENCLOSURE MATERIAL/RATING	Industrial (metal)/IP30		
<b>POWER REQUIREMENTS</b>			
POWER INPUT	5 VDC +/- 5%; Digi approved power supply must be used		
POWER SUPPLY	See accessory options		
POWER CONSUMPTION	Typical 1.2 W, Max 2.5 W	Typical 3.5 W; Max 11 W	
<b>ENVIRONMENTAL</b>			
OPERATING TEMPERATURE	-30° C to 70° C (-22° F to 158° F)	-30° C to 70° C (-22° F to 158° F) Reduced performance above 60° C (140° F)	
RELATIVE HUMIDITY	5% to 95% (non-condensing)		
<b>APPROVALS</b>			
GSM/UMTS	PTCRB		
CELLULAR CARRIERS	Verizon, AT&T, certified by most major international carriers		
SAFETY	IEC 60950-1:2005; EN 60950-1:2006; CSA C22.22 No. 60950-1		
EMISSIONS/IMMUNITY	FCC Part 15b, Industry Canada (IC), CE Mark		
<b>WARRANTY</b>			
PRODUCT WARRANTY	3-year + Digi Foundations*		

\*Digi Foundations can extend the standard three-year warranty to a Limited Lifetime Warranty that provides replacement with a new or similar Digi product for a period of five years from the date of purchase. After five years from the purchase date, the warranty value will revert to a 40 percent credit towards the MSRP of an equivalent product from Digi.

## DIGI REMOTE MANAGER®



### INFRASTRUCTURE

- Hosted in a commercial-grade SAS 70-certified environment
- Superior availability, operating to 99.9% or greater
- Open APIs available to support application development

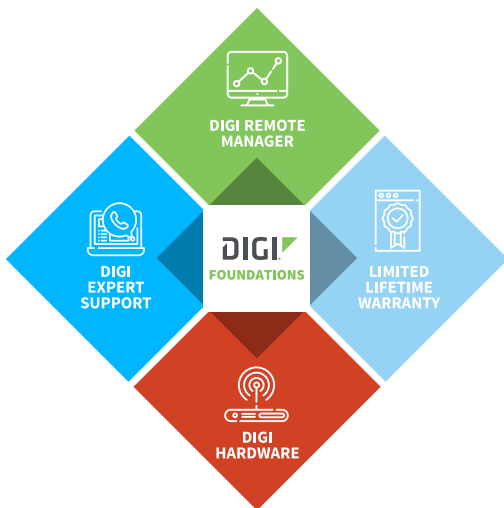
### CAPABILITIES

- Centralized management of remote devices over 3G/4G/LTE
- Define standard configurations and automatically monitor individual devices for PCI security compliance
- Report and alert on performance statistics, including connection history, signal quality, latency, data usage and packet loss
- No servers or applications to operate and maintain
- Complete tasks for your entire device network in minutes
- Edit configurations and update firmware for your individual devices or groups
- Monitor the status and location of your remote device via a web browser
- Active or deactivate cellular lines and monitor data to ensure you never incur overage charges

### SECURITY

- Certified SSAE-16 facilities
- Over 175 security controls in place to protect your data
- Enables compliance with security frameworks like PCI, HIPAA, NIST and more
- Earned SkyHigh's Cloud Trust Program highest ranking of Enterprise-Ready

## DIGI FOUNDATIONS™



### IT'S TIME TO CONNECT WITH CONFIDENCE

The convenient, comprehensive and secure way to integrate IoT communications hardware, device management software, global support and lifetime warranty protection into a connectivity solution to simplify your IoT network growth.

- [Digi Remote Manager®](#) (DRM) gives you a single point of contact, command and control with sophisticated remote device monitoring and management tools.
- [Digi Expert Support](#) is available around the clock, seven days a week, around the world with experts ready to provide technical support by phone, email or online.
- [Digi Limited Lifetime Warranty](#) lowers the total cost of ownership with hardware protection and equipment upgrades to expand your network as needs evolve.

Digi Foundations, with DRM, simplifies network and device management – for hundreds or hundreds-of-thousands of Digi or third-party devices – with options to upgrade as technology evolves. Isn't it time you got better connected?

For more information visit: [digi.com/foundations](http://digi.com/foundations)

**PART NUMBERS****DIGI XBEE® INDUSTRIAL GATEWAY**

XGI-20CZ7-E00-W0	Digi XBee Industrial Gateway - ZigBee to Ethernet, power supply and antenna not included
XGI-20CZ7-EU7-W0	Digi XBee Industrial Gateway - ZigBee to HSPA+, power supply and antenna not included
XGI-2PCZ7-E00-W0	Digi XBee Industrial Gateway - ZigBee Pro to Ethernet, power supply and antenna not included
XGI-2PCZ7-EL1-W0	Digi XBee Industrial Gateway - ZigBee Pro to Cat 1, power supply and antenna not included

**DIGI FOUNDATIONS™****AVAILABLE FOR DIGI XBEE INDUSTRIAL GATEWAY**

DGF-BDL-STAN-1YR	Digi Foundations add-on, 1 year, includes Expert Support, Digi Remote Manager, and Limited Lifetime Warranty
DGF-BDL-STAN-3YR	Digi Foundations add-on, 3 years, includes Expert Support, Digi Remote Manager, and Limited Lifetime Warranty
DGF-BDL-STAN-5YR	Digi Foundations add-on, 5 years, includes Expert Support, Digi Remote Manager, and Limited Lifetime Warranty

**PART NUMBERS****ACCESSORIES**

76000976	Kit, Digi TransPort 9-30 V DC/DC adapter
76002021	Power supply, 5 V barrel plug, wall plug in, commercial range
76000965	Kit, Digi TransPort WR11 XT power supply Int, industrial temperature range

FOR MORE INFORMATION  
PLEASE VISIT **DIGI.COM**

**DIGI SERVICE AND SUPPORT** / You can purchase with confidence knowing that Digi is always available to serve you with expert technical support and our industry leading warranty. For detailed information visit [www.digi.com/support](http://www.digi.com/support).

© 1996-2019 Digi International Inc. All rights reserved.  
All trademarks are the property of their respective owners.

91004218  
B1/1019

**DIGI INTERNATIONAL WORLDWIDE HQ**  
877-912-3444 / 952-912-3444 / [www.digi.com](http://www.digi.com)

**DIGI INTERNATIONAL GERMANY**  
+49-89-540-428-0

**DIGI INTERNATIONAL JAPAN**  
+81-3-5428-0261 / [www.digi-intl.co.jp](http://www.digi-intl.co.jp)

**DIGI INTERNATIONAL SINGAPORE**  
+65-6213-5380

**DIGI INTERNATIONAL CHINA**  
+86-21-50492199 / [www.digi.com.cn](http://www.digi.com.cn)

